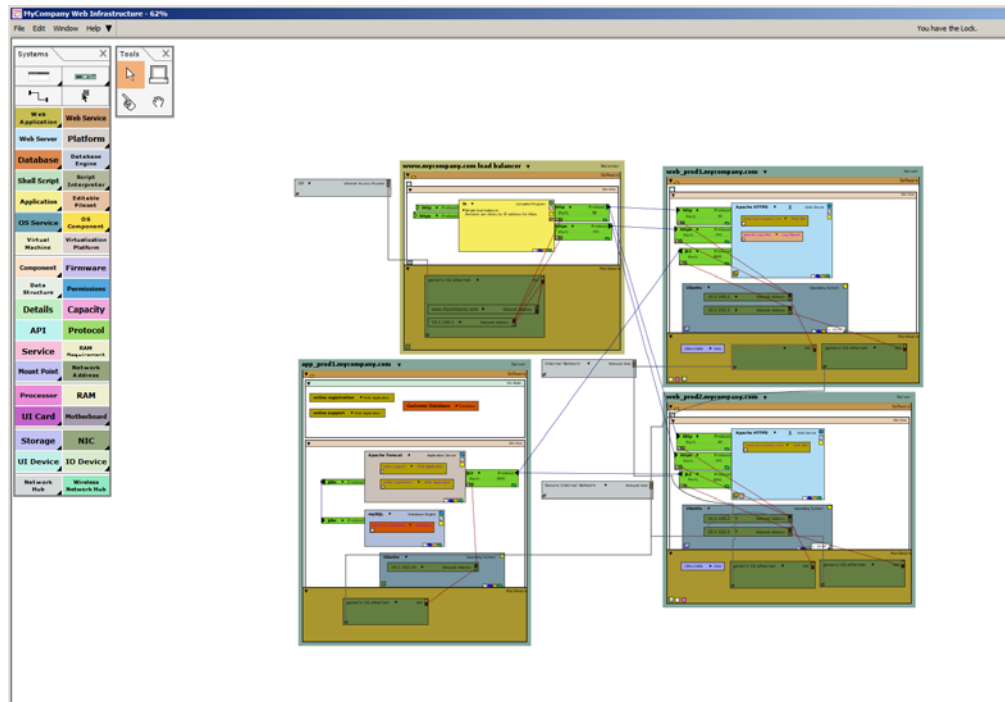
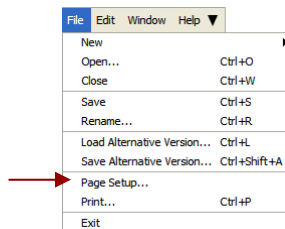


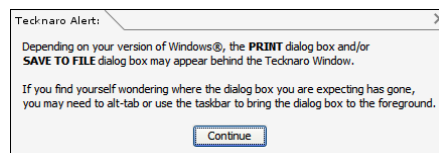
Open a canvas with a few items on it or, simply build a new one and throw a few systems or tasks onto it. Now zoom out until you can see your drawing along with some surrounding canvas:



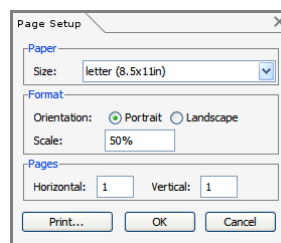
To print from Tecknaro, choose Print from the File Menu:



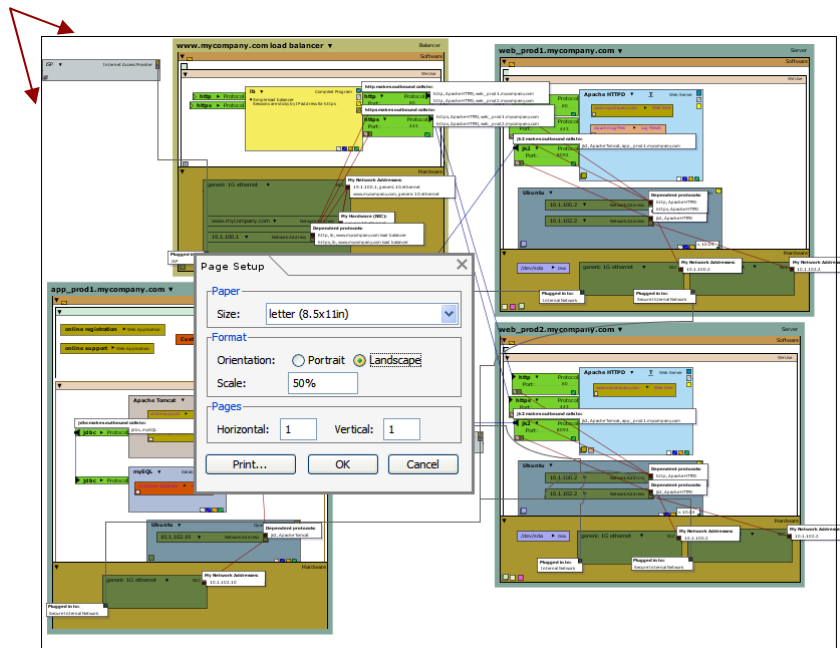
Tecknaro displays a reminder about some Windows behavior which might come in handy:



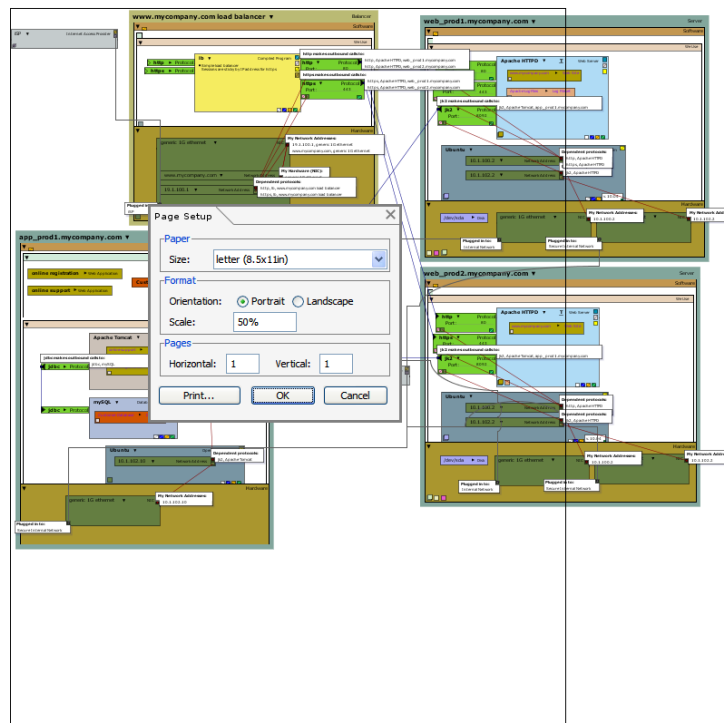
Choose Continue and Tecknaro displays the Page Setup dialog box:



Note that along with the dialog box, Tecknaro also displays a border along the print area based on the current Page Setup settings:



When you change the page setup, the border will change to show the new settings. Choose a different orientation to see this in action:



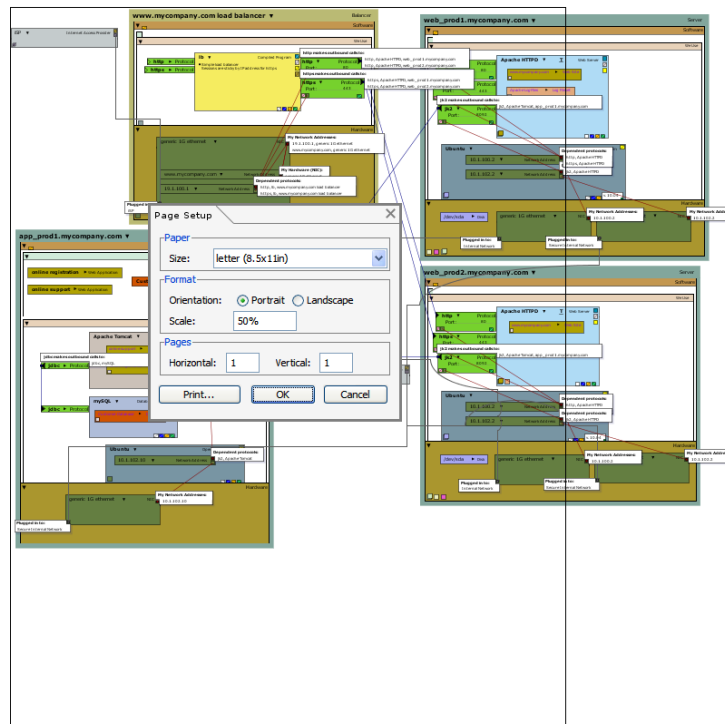
In Page Setup you can:

- Choose a paper size
- Set Orientation
- Set Scale
- Set up tiling

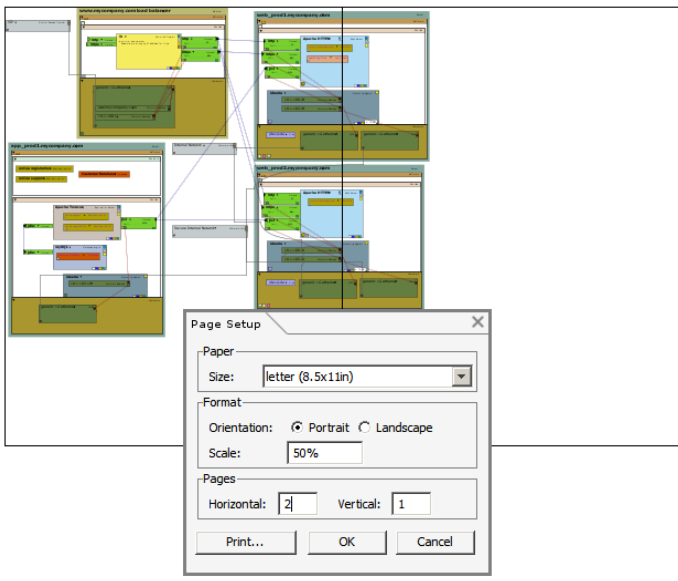
Note that the print scale is set to 50%. Since Tecknaro will print at screen res at 100% scale, the 50% setting ensure enough resolution for most common printing devices such as plotters or color printers. We recommend that you print canvases at 50%.

Tiling pages

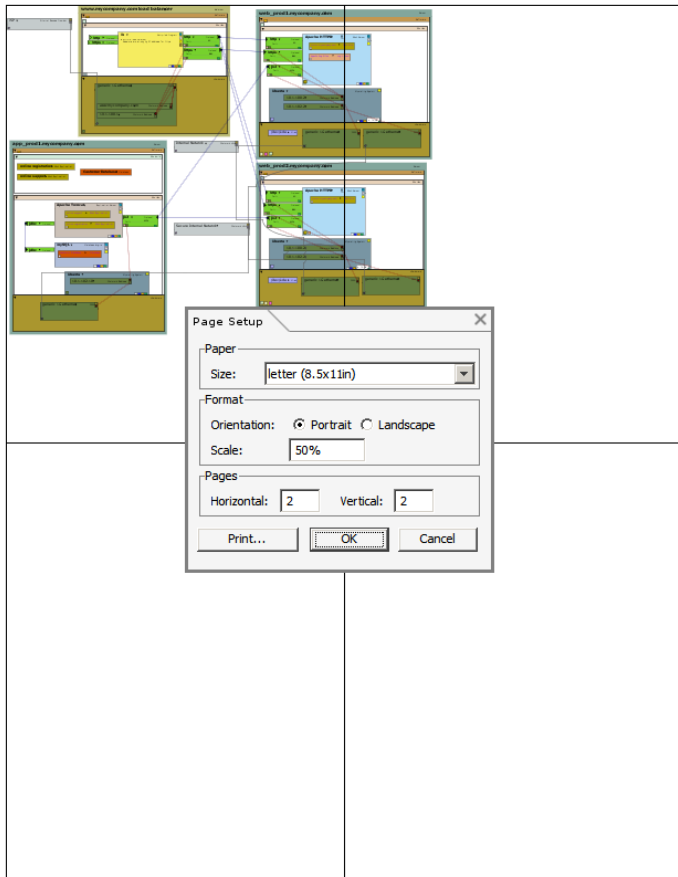
You can use page set up to tile your print output. By default Tecknaro displays a tile value of one horizontal and one vertical:



Change the horizontal value to two and Tecknaro displays two horizontal tiles:



Now change both horizontal and vertical values to two and Tecknaro displays the tiles accordingly:



Note: Tecknaro is designed to be a mental space, not a physical space. It is not meant to replicate or emulate a paper based environment. It's going to take a bit of time to get used to that concept. When you actually start to describe truly complex systems in some detail, you'll start making enormous canvases and will have to figure out some printing strategies for large canvases, get on a first name basis with a local service bureau that has a plotter, or if you do a lot of drawing, think about investing in a 36" or larger plotter.